

Term 4
Week 1 – 7 October 2015
Distributed weekly on Wednesday

03 5728 2940
03 5728 2500
info@bms.vic.edu.au
www.bms.vic.edu.au
42 Gilchrist Avenue
PO Box 306
BEECHWORTH VIC 3747
Find us on facebook
@beechmonty



Term 4

5th October – 16th December

11 weeks

1 pupil free days – Report Writing Day

1 public holiday – Melbourne Cup

October

9th Friday – Grade 6 & staff dinner

15th Thursday – Walk to School Day 8am Post Office and Breakfast
8.30am at School

15th Thursday – Committee of Management Information Session
6pm

28th Wednesday – Satisfaction Surveys due back

29th Thursday – Great Story Play Memorial Hall 4.30pm

November

2nd Monday – Pupil Free Day - Report Writing

3rd Tuesday – Melbourne Cup Public Holiday

11th Wednesday – Remembrance Day 11am

16th Monday – 20th Friday – Cycle 1 kindergarten parent teacher
interviews

17th Tuesday – Instrumental student performance evening

25th Wednesday – Grandparents Day Cycle 1 10-11am, Cycle 2&3 11-
12noon

December

4th Friday – Cycle 1 Prep reports distributed

4th – Graduation and Farewell Assembly 1pm, Graduation Dinner
6pm

7th Monday – 10th Thursday – Cycle 1 Prep parent teacher interviews

7th Monday – 11th Friday – Cycle 3 Sovereign Hill & Queenscliff Camp

9th Wednesday - Volunteer Afternoon Tea 2.00-2.45pm

11th – Cycle 2&3 reports distributed

16th Wednesday – End of Term 4. 3.15pm finish

18th & 19th Thursday & Friday – Pupil free days

News from the Board

The Committee of Management invite all parents and staff to meet with us next Thursday evening. We have focused on a number of areas this year and would like the opportunity to share with you our work to date, decisions that have been made and our vision for next year. Areas to be covered include infrastructure works, completing the building plan for the school, Block Grant and school fees.

There will also be the opportunity to provide feedback to the COM and ask questions in areas that are of interest to you.

**The meeting will be held at the school 6:00pm
Thursday 15th October.**

We hope you can make it!

Karen Smith

BMS Committee of Management Chair

From the Principal

Satisfaction surveys will be distributed to families next week with the newsletter. It would be appreciated if you would take the time to complete the paper based form and return to the school by 28th October. The surveys inform decisions for the future operations of the school and are included in the 2015 Annual Report. All responses are appreciated.

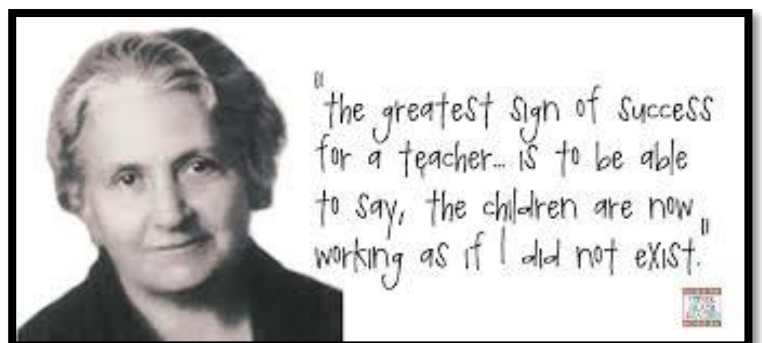
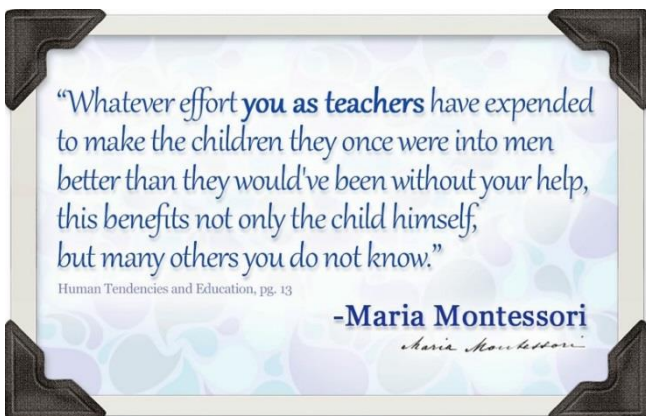
Josh was successful in obtaining a grant of \$1700 under the sporting schools initiative. This money will be used to purchase sporting equipment for use by the students. In addition we received \$200 from our participation in Jump Rope for Heart – thanks to those families who participated. That money will also be used for sport equipment. Thanks Josh for your efforts in building up our physical education program.

RSVP for the Resilience Project Community session (see poster in Community News section of newsletter) are required to the office by Thursday.

Thanks to Karen Bowey, Cycle 2 Director for spending days of her planning and preparation time co-ordinating suppliers, workers and volunteers in laying the grass in the Cycle 2&3 playground/ball game area. Karen was successful in obtaining a grant to make this all happen.



Monday was World Teacher's Day – teachers are an integral part of our society. Have you thanked a teacher today?



Monday was also the 2nd anniversary of the move to the new school. As the sun was streaming in through the front windows I was taken back to the enormous task that was undertaken by so many people in relocating us and then setting up the new environment. Whilst the work is not completed there has been such growth and consolidation. There will always be work to do and new people to come into the school, fresh with new ideas and energy but looking back over the last two years, it is indeed a pretty incredible journey from the old to new and one that I am proud to have been associated with. I will enjoy looking from afar at what progress is made over the coming years.



We are now well into administrative preparations for the 2016 school year and these will be communicated via the newsletter and through parent packs over the coming weeks – this will include staffing appointments, fees, initiatives etc. With a change in leadership in 2016 the school will function differently in some areas but for the remainder of this year I will continue to endeavor to communicate with clarity and in a timely manner so that everyone is kept informed of what I know is happening. If you have any questions please don't hesitate to speak with me but please be aware that I am keen to facilitate the new Principal (once the Committee of Management have made an appointment) coming in and leading the school in their own way. If you have any questions please contact myself or the President of the Committee of Management, Karen Smith kecodesigns@gmail.com.

Kind regards Heather

General News

Walk to School and Breakfast

As part of Walk to School October Beechworth Montessori School will be conducting our group walk to school day on Thursday 15th October 2015.

Students and staff and parents can meet at the Post Office at 8am for an 8.05 departure. You may like to join us on the way up the hill. Cycle 1 children will require supervision from a parent or authorised sign-in person. Upon arriving at school there will be a free continental breakfast provided by Indigo Shire Council and Edan will be offering his brewed coffee for sale.

Term 4 Icy poles for Sale

Icy poles will be available for sale Friday lunchtimes for Cycle 2 and 3 children. Children will only be sold a single icy pole – not multiple. Children will be able to choose from lemonade, raspberry or cola.

No pre-ordering required, simply bring along your 50c and purchase your icy pole once you have finished eating your lunch. This will continue each Friday unless:

- 1) children walk around with their icy pole as opposed to sitting and eating, or
- 2) rubbish is left in the yard.

If these occur, icy poles will not be for sale the following Friday.

Thanks Turquoise.

Lemongrass Café Lunch Orders

- ❖ Every Wednesday in Term 4, \$3.50 per sushi roll
- ❖ Choices:
 - Egg & Salad
 - Tuna & Avocado
 - Teriyaki Chicken

Collect an order form from the foyer, place your order and **correct money** in a **zip lock bag** and place in the Form Lodgement Box in the foyer. No credit possible and money must be in a zip lock bag. Orders to be placed at school by Tuesday 3pm – late orders cannot be accepted.

Early Childhood Director Cycle 1 (3-6 years)

Full time position

An exciting opportunity exists for the right person at our progressive Montessori school that caters for children aged from birth – 12 years.

This opportunity for a leadership role in our school will be pivotal to maintaining the delivery of a high quality program. Our early childhood service recently received an Exceeding Rating under the National Quality Framework.

Essential criteria:

- VIT registration for early childhood teaching
- VIT registration for school aged children teaching
- AMI, MWEI or other Montessori qualification in 3-6 years
- Current certification in First Aid, Anaphylaxis, Asthma and CPR
- Genuine interest and experience in the care and support of young children and their learning in a Montessori environment
- Flexibility and ability to lead and work in a team
- Strong communication skills and the ability to work collaboratively with other staff across a broad range of programs
- Demonstrated ability to communicate clearly and effectively with carers and parents

Desirable criteria:

- Experience working with and understanding of the NQF and development of a QIP
- Knowledge and understanding of the EYLF
- Teaching experience 3-6 years
- Experience in managing a multi-aged classroom and developing lessons and materials for this age group

Applicants are to provide a cover letter, current CV and evidence and examples addressing the essential and desirable criteria.

For an application pack, including the school prospectus and position description:
Phone 03 5728 2940 or email principal@bms.vic.edu.au

Applications close Fri 16th October 2015

Cycle 2 Director (6-9 years)

Full time position

Commencing January 2016

This position is ongoing subject to a probationary period and review.

An exciting opportunity exists for the right person at our progressive Montessori school that caters for children aged from birth – 12 years.

This opportunity for a leadership role in our school will be pivotal to maintaining the delivery of a high quality program.

Essential criteria:

- VIT registration for school aged children teaching
- AMI, MWEI or other Montessori qualification in 6-9 years
- Current certification in First Aid, Anaphylaxis, Asthma and CPR
- Genuine interest and experience in the education and support of children and their learning in a Montessori environment
- Flexibility and ability to lead and work in a team
- Strong communication skills and the ability to work collaboratively with other staff across a broad range of programs
- Demonstrated ability to communicate clearly and effectively with carers and parents

Desirable criteria:

- Teaching experience 6-9 years
- Qualifications and/or experience providing individualised learning for students with learning differences
- Experience in managing a multi-aged classroom and developing lessons and materials for this age group

Applicants are to provide a cover letter, current CV and evidence and examples addressing the essential and desirable criteria.

For an application pack, including the school prospectus and position description:
Phone 03 5728 2940 or email principal@bms.vic.edu.au

Applications close Fri 16th October 2015

Ruby Room News

Welcome back everyone. We hope you managed to have a lovely break or some time with your children. Already it is starting off warm so please pack a sunhat for your child as they will have to stay inside if no hat. We do supply sunscreen or you are welcome to bring your own but please label it.

As from Tuesday I will be away, returning in the first week of November. Wiggy Brennen from Emerald will be taking the Tiny Tots sessions, Zoe Pinard will be taking Transition and Geraldine (Emerald) and Lisa (Amethyst) will be sharing the ELOC program in the afternoons. So you are left in very capable hands.

We say goodbye to Gabriel and Kailash from the Transition program as they have moved into their Cycle 1 rooms and thank Christy, Adrian, Amandhi and Martin for their parent duty times.

We will be looking at insects for the next few weeks and hope to have a productive ant farm for the children to view. If you find some insects and would like to bring them along please do, as small children are fascinated by them.

I look forward to seeing everyone in a month's time and wish you all the best.

Enjoy this beautiful Spring time!

Michaela

NB: There is now a door bell at the front of the school for parents to notify Ruby Room staff that they are here to pick up children after hours from the ELOC (early learning and occasional care program). Please use this door bell and a staff member will come down to let you in.

Cycle 1 News

Across Both Rooms

Welcome back to the final term for the year. Please ensure your child has a hat in their bag each day and that you provide sunscreen (this should be labelled with your child's name and given to a staff member) or your child will use the sunscreen we provide. A cup is also necessary to ensure children can independently access drinking water throughout the day.

We begin the term by welcoming Kailash Kostirova who joined Emerald room for the first time this week and his parents Martin and Amandhi. Also, a belated welcome to Nina Prebble who started late last term and her parents Karen and Martin. We really enjoy having younger siblings enter the room as a chance to reconnect with families.

Some new students also started in Amethyst room. Welcome to Leo Woodburne who started toward the end of Term 3, moving here from the UK, and his parents Olivia and Matthew. This week four new children started in our room. Welcome to Gabriel Rodda and his parents Christie and Adrian. Evie Domoso-Harrison and her parents Joanna and Daniel, and warm welcome to Bryce and Freya Muller who just moved to Beechworth during the holidays, and their parents Nicki and Marcel.

Also farewell to Lilly Dodds and Reuben Pfahlert as they complete their transition to Cycle 2. We miss their leadership in the room and will be working to actively encourage new leaders to emerge from within the group.

A special thanks to the Riddoch family for looking after our chickens over the holidays.

Cycle 1 activities to occur this term include:

- Spring Walks in the May Day Hills estate
- Family picnic in the playground
- A visit to the library
- A visit to the circus school run by Zoe and Xav Pinard in Yackandandah
- Parent teacher interviews
- Participation in the whole school performance developed by Cycle 3 students
- A visit by Emerald to the Riddoch family farm in Wooragee and Lou Ritchie's Silver Creek Sourdough Bakery
- A visit to the post office and Lake Sambell by Amethyst

Whilst Michaela is away for 4 weeks and Geraldine spends more time in Emerald to further her studies, Wiggy and Lisa will be supporting the Ruby Room programs throughout the week.

Community News

Beechworth Tennis Club lessons and coaching commences every Wednesday at the town courts at 5pm. Simply turn up for more details.



Volunteer Skillsbank The Centre
your Community College

Volunteering can change your world and someone else's, if you want to make a difference contact us.

- Get involved!
- Meet new people!
- Have fun!
- Do something important!

Find out more by contacting the Volunteer Skillsbank today!

VOLUNTEER SKILLSBANK
Chisholm Street, Wangaratta 3677 Ph: (03) 5721 0258
E: csb@thecentre.vic.edu.au www.thecentre.vic.edu.au

TOID 4172

Movie for the kids and a night out for you?

Consider this...

Give the children an early tea, put them in their PJs, drop them off at school at 6pm where they can enjoy a G rated movie with friends, or quiet reading, colouring etc...

Then you and your partner enjoy a meal out without the children!

Collect the children by 8pm, and tuck them into bed.

Sounds appealing doesn't it?

Cost? Only....

\$10 for 1 child, \$15 for 2 children

\$20 for 3 children

All money contributes towards Amber's China fund. Supervision provided by Amber and Karen Bowey

When? October 23rd, November 6 & 20

Book at karenb@bms.vic.edu.au

AN INVITATION TO ATTEND AN INSPIRING SESSION ABOUT RESILIENCE

Inspiring youth
Empowering teachers
Engaging parents



THE RESILIENCE PROJECT™

The Resilience Project is visiting the Beechworth & surrounding communities to deliver a community wide resilience program for children, parents/carers and teachers.

PARENT/CARER & COMMUNITY SESSION

When: Tuesday 13 October 2015 at 9.30am or 7.00pm

Where: George Kerferd Hotel - Albert Rd Beechworth

RSVP: By Friday 9 October 2015 to your school, kindergarten or child care centre

Hugh van Cuylenburg will be presenting information about resilience & how to practice strategies to develop resilience in children & ourselves including mindfulness, gratitude & empathy.

Funded by the Foundation of Rural and Regional Renewal as part of the Victorian Bushfire Appeal Fund. Partners - Beechworth Health Service, Wooragee Primary School, St Joseph's Primary School, Beechworth CFA, Beechworth Community Child Care Centre, Beechworth Kindergarten, & Indigo Shire Council



'Helping Young Australians to be Mentally Healthy'



[f](https://www.facebook.com/theresilienceproject) [t](https://twitter.com/theresilienceproject) [i](https://www.instagram.com/theresilienceproject)

p: 0412 432 163
e: bookings@theresilienceproject.com.au
w: www.theresilienceproject.com.au



Come along to our

FREE MORNING TEA

**Saturday 10 October 2015
10:30-11:30am**

Come and join us for sweet and savoury nibbles, coffee and tea and a good natter. Your children will be entertained too as they road test our huge range of toys, games, puzzles, ride-ons and costumes

Everyone is welcome!

**BEECHWORTH
MUSIC FESTIVAL**

SAT 23 JAN 2016

BRIGGS
KING OF THE NORTH
THE PUBLIC OPINION SIX
BIG SMOKE • MY LEFT BOOT
SUGARCANES • SHE WOLF
LIV CARTLEDGE & BAND • MUTTON
RICHARD PERSO • GEOFF JACKSON
DJ MERMAID • MC CAT MCGAURAN

BMF 2016
MADMAN'S GULLY AMPITHEATRE
MAYDAY HILLS, BEECHWORTH

A DAY AND NIGHT OF MUSIC,
GOOD SAFE TIMES, CAMPING
AND A COMPLETE
SENSORY
OVERLOAD!

Unlock Your Senses

TIX ON
SALE
OCT 12!

www.beechworthmusicfestival.com

Twitter: /beechmusicfest Facebook: /beechworthmusicfestival Instagram: /beechworthmusicfestival YouTube: /beechworthmusicfest

Indigo Builders Beechworth 0417 231 770

Indigo FM

Various Victoria

'Go Kids' Sewing

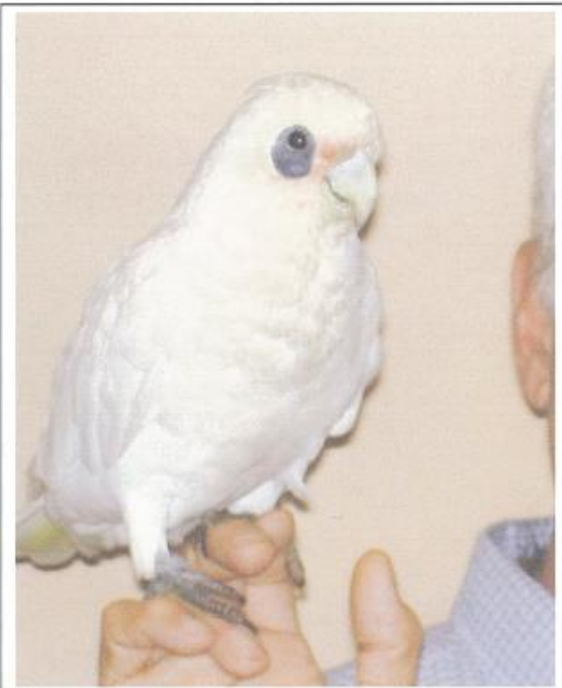
Workshops

with
Jane Holden

Learn to sew and have fun!
Beginners & Intermediate
Learn simple techniques for life!

Workshops available to schools & Vacation Care Programs.
Weekend Workshops – Saturday's: 1.5 Hour lessons
Weekdays by appointment.
\$25.00 per student
Call to Book ☎ 0429 856 893
Email: info@makeitfitbeechworth.com.au
44 Bridge Rd Beechworth
Make it Fit
Tailoring Seamstress
Formerly at "Designer Garment Alterations"

REWARD FOR HELP IN FINDING LOVED PET CORELLA



ON MONDAY 14 OCTOBER 8:30 am
this morning, 5 [REDACTED] at about 9:30 am,
we lost our bare-eyed cockatoo, a short-billed
corella. We are very concerned for her. She has
been coming outside in the garden with us, but
with Spring, flew off this morning and we have
not been able to locate her.

It is likely that she found someone friendly,
with a shoulder to sit on, or to follow and then
to walk beside on the ground. [REDACTED]

[REDACTED]. We hope someone may
have kept her safe, as she has a ring on her leg.

She can be identified by her friendliness, the
blue patch about her black eyes, the pink and
white crest, and a split ring on her left leg.

Please ring us on 0406376082 or 035728 2468
or the local vet if you have any news of her.
Any information at all would be very welcome.

Harvey Anderssen

It is the Clearing Sale on our farm to sell off all the old & historic things that are beautiful, but take up way too much space in our sheds! (and we have decided we're a farm, not a museum!) and there's the grain farming things we don't use any more (and also take up plenty of room!) plus baby gear, etc

On offer are:

- 'baby things' (cot, prams, bassinet, change table, etc)
- Plenty of historic/ antique/ 'bespoke' farm things that date back to late 1800's; including things to do with saw milling; bee keeping; farming; rabbit trapping; broom making; etc)
- Newer grain farming equipment (silos, grouper bins, etc)
- Cars, motorbikes (including a tiny Honda 50), tractors (old), etc
- Some furniture including antique stuff from Mt Buffalo Chalet

LANDMARK **Harcourts**

FORTHCOMING CLEARING SALE

2162 CARBOOR-EVERTON ROAD, CARBOOR
SATURDAY 17TH OCTOBER
10AM ONSITE



LANDMARK HARCOURTS WANGARATTA

44 Ryley Street, Wangaratta

(03) 5722 9444 Matt Sanders 0410 821 336

Vendor: Harry & Nicola Bussell 0428 433 611

www.landmarkharcourts.com.au/ClearingSales/View/756

Beechworth Health Service Urgent Care Centre

At Beechworth Health Service we are often asked about the role of our Urgent Care Centre:

- Our Urgent Care Centre is staffed by nurses who are trained in advanced life support
- Upon presentation you will be assessed by a nurse
- Depending on the assessed severity of your condition you will either be treated by a nurse or a Medical Practitioner will be called
- If a Medical Practitioner is unavailable we have access to Telehealth consultation with an Emergency Doctor at North East Health Wangaratta, subject to your condition being able to be adequately treated this way
- If your condition is serious or cannot be treated at Beechworth Health Service arrangement may be made to transfer you to another facility
- Our Urgent Care Centre is not an Emergency Department and so people who are seen by a medical practitioner will incur a cost
- If you wish to attend an Emergency Department the closest to Beechworth are in Wodonga at Albury Wodonga Health and Wangaratta at North East Health Wangaratta

