

Montessori Memo



Term 4
Week 3 - 21 October 2016

*Full newsletter is distributed fortnightly
with a brief memo in alternate weeks.*

Important Dates coming up

Wednesday 26th October

-Instrumental Performance Evening

Friday 28th October – Community Breakfast

Monday 31st October – Pupil Free Day

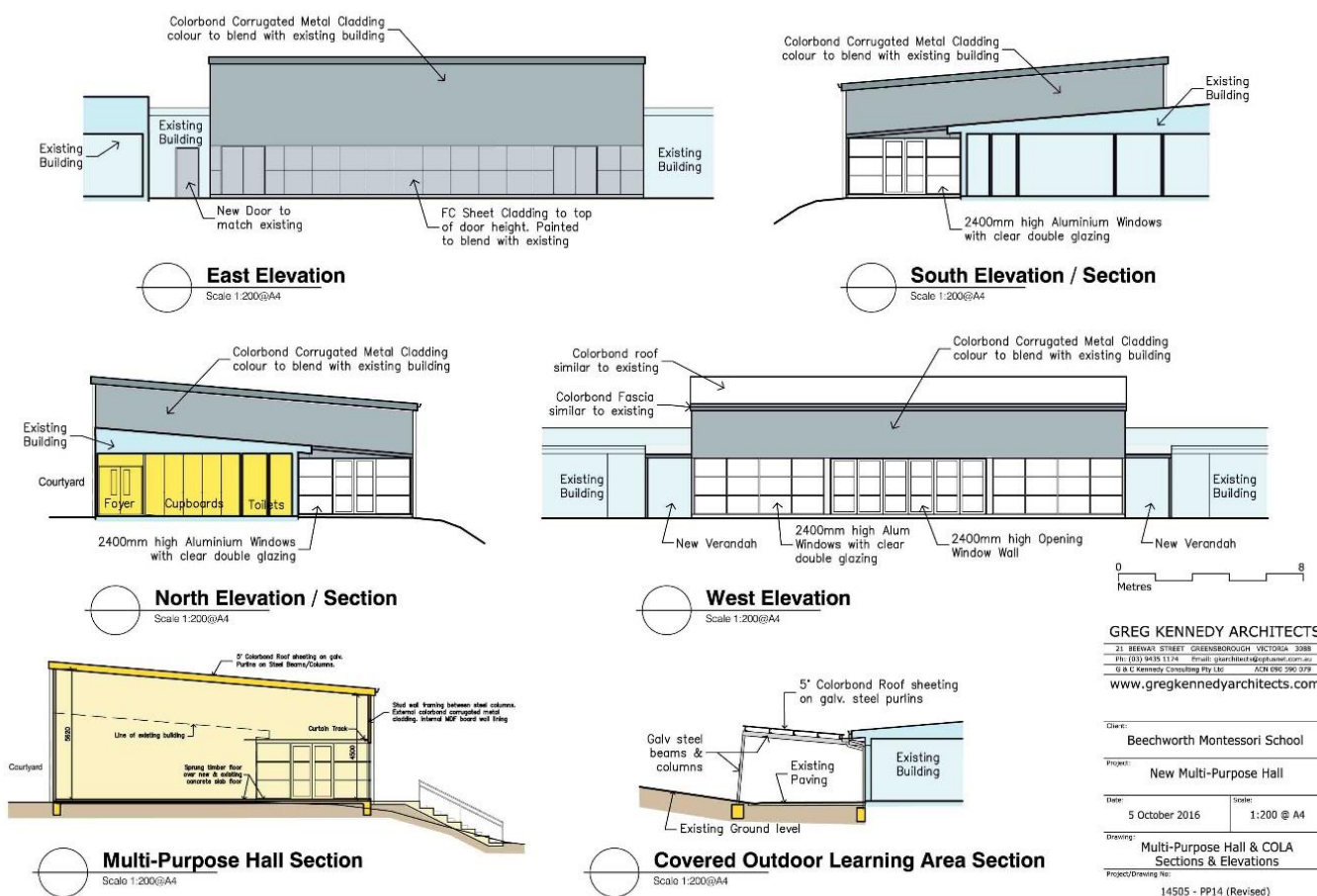
Tuesday 1st November – Public Holiday

Multipurpose Hall Update

The design stage for the Multipurpose Hall is now completed and the tender process is commencing in the coming days. Six local and regional commercial builders have been invited to tender for the project, which will close mid November and be awarded by early December. The project includes four main components:

1. **Multipurpose Hall** – timber sports floor, marked court, stage (portable), black out curtains, evaporative cooling, gas heating, AV equipment, p inboards, lighting, double glazing and bifold doors on Cycle 2/3 playground.
2. **Heating and floor coverings** – Classrooms, hallways and the foyer will have vinyl (wet areas), carpet and ribbed entry matting near doors, and a hydronic heating system (gas fired).
3. **Covered outdoor learning area (COLA)** – steel frame with colourbond roof including tinted roof sheeting in front of kitchens to let light in.
4. **Other alterations** – widening link passage outside to Cycle 2/3 playground, relocation of the staff room to the existing music storage room at the front of the building, and relocation of the Principals office to the music room. It was decided that Bronwen's current office would be most suited to music lessons especially after hours, where parents can sit in the foyer in full view of the lesson as a line of sight view for parents/other staff for specialist lessons, sits better with our interpretation of the requirements of the child safe where individual children and adults are working/learning together.

Greg Kennedy is the Architect who has worked with the Multipurpose Hall subcommittee to develop the design, which has been a very exciting and enjoyable project. The building contract will specify that any reclaimable existing building materials from the school such as bricks, doors and toilets be retained and recycled within the new development. Unfortunately the 'piano keys' design on the exterior walls of the hall was not approved by the Shire and a plain façade in keeping with the existing school building will need to be constructed. The project is due to be completed mid next year.



From the Principal

Our building plans are very exciting! Thanks so much to Penny Everingham, the Building Sub-Committee and the 2015 CoM who have got us to this point.

In regards to staffing. The recruitment panel have a shortlist of candidates and interviewed today, so I hope to be in a position to make an announcement soon. Referee checks will occur in coming days, followed by second interviews if required. The panel were impressed by the calibre of applicants. Terie will be greatly missed from the BMS community but the panel is extremely confident that all cycles will continue to grow from strength to strength.

Sharelle O'Reilly, has accepted the Communication, Compliance and Human Resource Officer role and will be commencing with us on November 7, I am looking forward to the support this role will provide across these areas.

Planning for 2017 is well underway and for those families who have not confirmed their intentions for next year the Finance Sub-Committee would appreciate notification of any changes to enrolments.

I will be taking a week's annual leave in the second half of next week. During my absence, please see Karen Bowey if you have any questions or concerns that need to be directed to the principal for Cycles 2 and 3, and Tameeka Thommers for Cycle 1. I will look forward to seeing you after Melbourne Cup Day.

Kind Regards, Bron Martin

Volunteers

We are looking for volunteers for Policy Update Working Group. They will need to proof read and give feedback to updated policies. Please let us know in the office if you would like to be involved.

Raffle

Tickets for our fundraising raffle are now for sale. The prize is a gorgeous 8 seater Red Stringybark table made by Eucalypt Woodwork Co. Books of 10 raffle tickets were placed in all parent pockets last week. The tickets are \$5 each or 5 tickets for \$20. The raffle will be drawn at our school performance on Tuesday 15th November so please ensure tickets and money are returned by Monday 14th November. If you require any further tickets to sell please see us in the office. We will also require all unsold tickets to be returned.

Thank you to the Wooragee Tennis Club for the kind donation of tennis equipment.



Discover Your True Voice

Chris James

Sat 22nd October
9.30am – 4pm

Supper Room
Beechworth Memorial Hall
101 Ford Street,
Beechworth, 3747



Your voice and expression can open a whole new world . . . singing & speaking. Learn how, in this one day workshop.

Internationally acclaimed voice teacher, singer, musician Chris James presents the power of true voice and expression.

Suitable for all – 'Everyone is born with a beautiful voice!'

Learn profound, practical voice/body techniques and self-empowering healing life skills. Release stress and strain, sing and express with ease and confidence. Known for his unique ability to bring out the best in everyone, Chris makes it fun and easy.

*'The way Chris helps us to express with our voice is amazing!
To see our potential – everybody can experience it.'* E.S

\$120 pre-booked, concessions available.

CPD certificates available

www.chrisjames.net

Bookings: Kim Ph: 0457 123 400
Email: kimsalter77@yahoo.com.au



We have joined the trail for the biggest garage sale of the year!

Come and join us, set a stall and sell your wares.

Where: **Saunders Self Storage**

19 Crawford St, Beechworth

When: **Saturday, October 22nd**

Time: **8am**

If you need anymore information feel free to email at:

Mat.saunders@inet.net.au

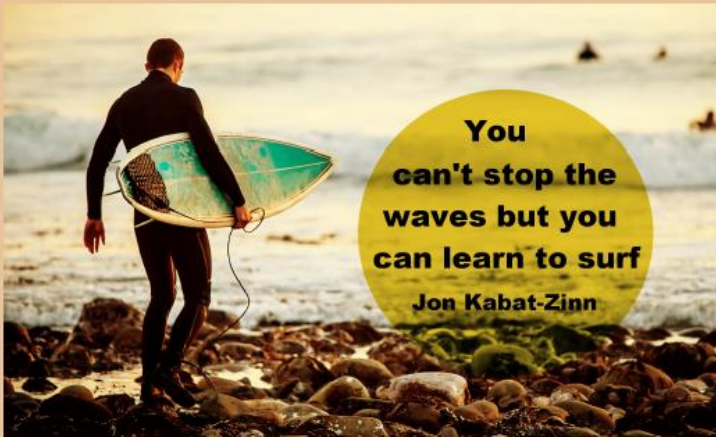
For more information about the annual garage sale trail visit

www.garagesaletrail.com.au



From Surviving to Thriving

Mindfulness Based Stress Reduction



Looking to be mindful in daily life? To build resilience, gratitude, and a greater ability to respond rather than react to events and circumstances?

The Mindfulness Based Stress Reduction (MBSR) program is the gold standard in evidence based Mindfulness Training.

Suitable for both the absolute beginner and those wishing to further explore their mindfulness practice in a supportive environment.

Term 4 Course Dates - Wodonga & Wangaratta

8 weekly classes with a silent retreat day on Sunday 27/11

Wangaratta Daytime course : 9:30am to 12:00pm starts 19/10

Wodonga Evening course : 6pm to 8:30pm starts 19/10

Wodonga Daytime course : 9:15am to 11:45am starts 21/10

Cost : \$475 full fee, \$375 concession : early bird discount to 15/10

Book now at www.bordermindfulness.com/register or call 0419 699 306

the maker's market

BEECHWORTH HANDMADE MARKET
DESIGNERS AND ARTISTS FROM NORTH EAST VICTORIA

SATURDAY
NOVEMBER
5TH
9AM-1PM



BUY LOCAL
HANDMADE
FOR
XMAS

7 CHURCH STREET **OLD STONE HALL** ART SPACE + VENUE
www.facebook.com/oldstonehall



*My kids had an
absolute ball!*

Wodonga Children's Fair

'Our World'



A fun,
free family event!

**Sunday,
October 23
10am to 3pm**

Wodonga Racecourse - Hamilton Smith Drive

For more information and program highlights, visit
wodonga.vic.gov.au/childrens-fair or ph: (02) 6022 9300

Follow us: [f/wodongacouncil](https://www.facebook.com/wodongacouncil) [t/wodongacouncil](https://www.twitter.com/wodongacouncil)

Major
sponsor:

