

# Beechworth Montessori 2042

## 2008 Annual Report to the School Community



## School Overview

Beechworth Montessori was opened in 1997 and is the only Montessori Preschool in the North East Victoria. In 2007 a primary school for children aged 6-12 years old opened in the Emerald Building enabling children to complete their early childhood and primary school learning within the Montessori educational philosophy. Beechworth Montessori is an incorporated body with a voluntary, parent-operated Committee of Management. The Committee of Management is elected at the Annual General meeting which is held in first term of each year.

Our vision is to empower children to achieve their individual potential by providing educational excellence in a progressive Montessori environment.

Beechworth Montessori provides an enriching, holistic education guided by Montessori philosophies for children in a peaceful and harmonious learning environment. Beechworth Montessori is a children's centre run by its membership. Our philosophy is:

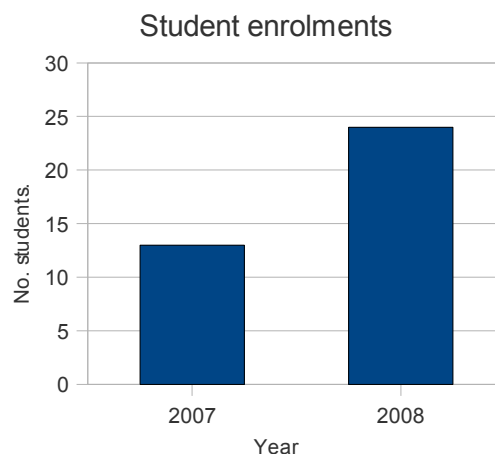
### **“Education for Life”.**

Beechworth Montessori aims to foster a love of learning and independence, a respect of self, of others and of the environment, with hands on and diverse experiences and ongoing opportunities to explore at the child's own spontaneous and natural development and to enable the child to “help me to help myself”.

Beechworth Montessori staff embraces the Montessori philosophy with a depth of knowledge and experience borne from a genuine desire to nurture the sense of joy and wonder that inspires children to discover and learn. The philosophy of providing an environment which allows the child to discover their true nature is shared by the staff and children's parents. Shared ideals create a real sense of community which facilitates the environment for growth both at Beechworth Montessori and in the wider community.

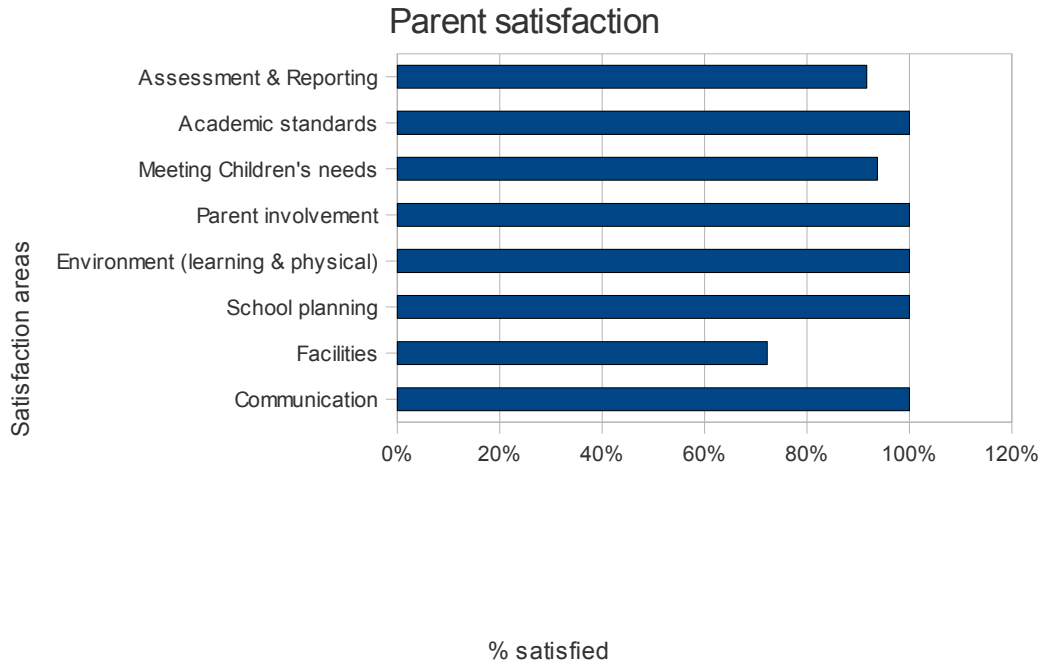
### **Student enrolments**

Primary school student enrolments increased from 13 in 2007 to 24 in 2008.



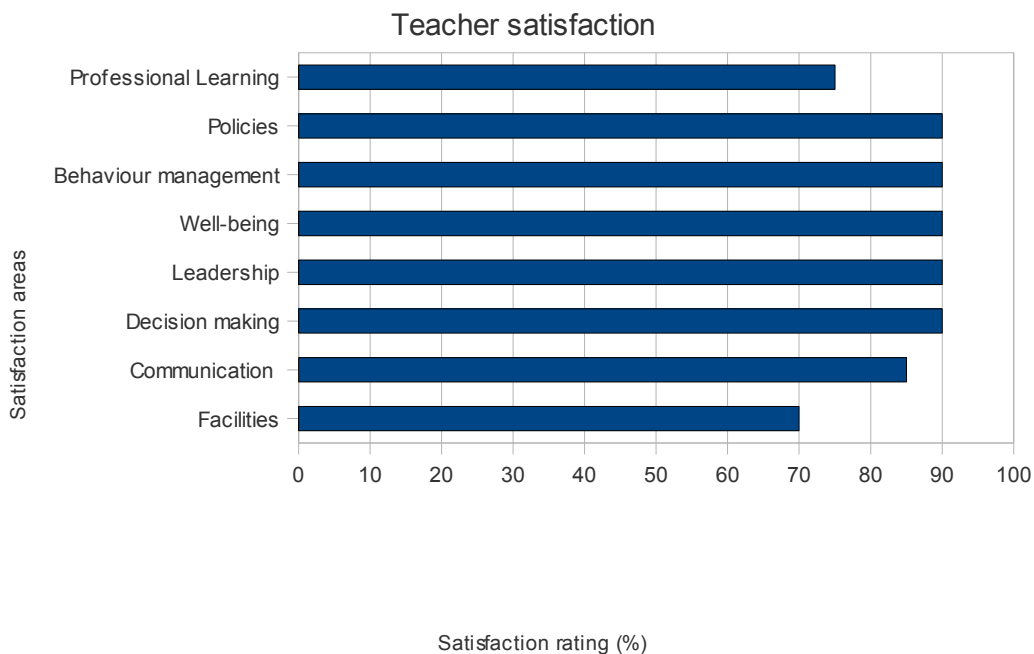
**Parent Satisfaction**

The average score for parent satisfaction with Beechworth Montessori Primary school on a scale of 0 to 100, where 100 is the best possible score is shown below in the graph titled Parent satisfaction.



**Teacher Satisfaction**

The average score for teacher satisfaction at Beechworth Montessori Primary school on a scale from 0 to 100 where 100 is the best possible score is shown below in the graph titled Teacher satisfaction.



## Teacher Absence

The average number of days absent per teacher was 8.5 days.

## Teacher Retention

Of the teaching staff at Beechworth Montessori Primary school at June 2007, 100% were still at the school at June 2008.

## Teacher participation in professional learning

All teaching staff have participated in professional learning throughout the year, such as Australian Government Quality Teacher Program, Thrass reading program, the Montessori Leadership Program, the National Montessori Conference, AISV New Leaders Training.

## Teacher Qualifications

All teachers in Victorian schools are registered with the Victorian Institute of Teaching. The requirements for registration with the Victorian Institute of Teaching can be found at; [.http://www.vit.vic.edu.au/content.asp?Document\\_ID=241](http://www.vit.vic.edu.au/content.asp?Document_ID=241)

Additional teacher qualification include Diploma in Montessori Teaching, Cycle 2.

## Principal's Report

Reflecting on the year 2008 shows how far the Beechworth Montessori Primary School has come in just 2 years since the school opened in 2007. 2008 saw the employment of a dedicated part time Principal and cycle 3 teacher due to the increase in enrolments from 2007, resulting in the split of the primary school into dedicated cycle 2 and 3 classrooms.

Some of the highlights for the year included school camp to 15 Mile Creek, the return of the Sustainable house tour fundraiser, the Italian themed dinner, and the school concert band visit from Kerang Secondary College. 2008 saw the school join the Beechworth District Sports Association (BDSA) participating in individual and team sports. 2008 also saw the school participate in cultural events with other local schools and the Beechworth Community. To me these events signify the school's growth and inclusion into the Beechworth & district community.

For me personally, it was a great experience to be involved with the school as Principal, administration and Cycle 3 teacher. A lot of work, a rewarding experience, and a realisation that for now, the classroom was where I needed to be as a teacher. So the hunt was on for a new Principal, and how lucky we were to secure Glen Watson from Canberra Montessori as our New Principal for 2009. Glen comes to Beechworth Montessori with 20 years experience in Montessori schools as a teacher and Principal. I wish Glen well for 2009.

Paul McMullen  
Principal, BMCG.

## School Council President's Report

The committee's broad agenda for the year was based on the strategic plan developed in 2007. Committee members again took on portfolios with specific responsibilities. We focused on the key areas of governance, marketing, future location, and fundraising.

The governance review assessed how well the existing organisational structure met the needs of our expansion to include a primary school. A particular concern was the rapid turnover of committee members which reduced effectiveness due to a loss of expertise and the lag period during which new members became familiar with their role. Governance models used at other Montessori schools were reviewed, however the committee eventually decided to retain the current model until the organisation became more sustainable. The Constitution was reviewed and found appropriate for the inclusion of a primary school. The purpose of the focus on marketing was to gain an understanding of how the organisation was perceived both within and without BMCG. The results would be used to develop a communication strategy and marketing plan.

During the year we discussed the need to build on the vision and values developed in 2007 however this was impossible to adequately cover in small bites at committee meetings. We decided to hold a facilitated strategic planning day early in 2009 to include the new Principal and committee members. It was felt that this would be the beginning of a unified strategic direction incorporating the views of a range of people in the organization. Key discussion areas are the future location of BMCG, and the development of a marketing plan incorporating a new logo and name, and a key message about the organization. This strategic plan will then provide the basis for the new committee's agenda in 2009.

The end of the year also saw the formation of a Parents and Friends group reporting to the Principal. With the committee's move towards a more strategic role, a need emerged for another group to take on social activities, fundraising, and a second hand uniform shop. This group will be a welcome addition to improve the social cohesiveness of the Montessori community and to support the Principal.

As I step down from 4 years on the Montessori committee I would like to thank all past and current committee members whom I have worked with for their enthusiasm and commitment. I would also like to thank the staff for their support and ideas, and for teaching my children. They are an extraordinary group who inspire many of us to become involved. I feel BMCG is now at a point where constant crisis management is behind us and a period of exciting growth towards a sustainable organization is beginning. I wish the new committee a productive and enjoyable year of work and look forward to finding new ways to remain involved with this wonderful group.

Fiona Wigg  
President, BMCG

## Student Progress & Achievements

### Student Learning

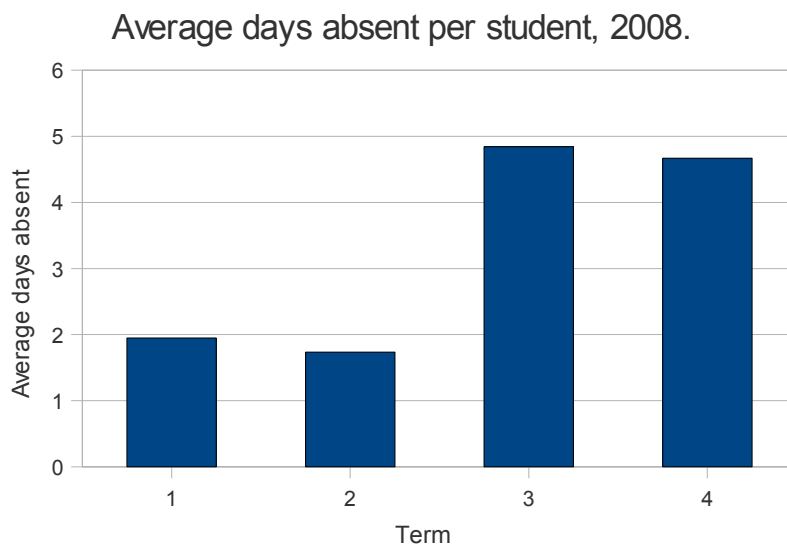
#### Percentage of students achieving at or above the National Minimum Standards

2008 was the first year that students from Beechworth Montessori participated in NAPLAN testing. 100% of year 5 students are achieving at or above the National Minimum standards.

### Student wellbeing

#### Average number of absent days per student

The average days absent per student are shown in the graph below for each Term of 2008. Term 1 is 1.9 days per student, Term 2 is 1.7 days per student, Term 3 is 4.8 days per student and Term 4 is 4.6 days per student.



### Post-school destinations

2008 is the first year that a Cycle 3 student has graduated from level 6 at Beechworth Montessori. For privacy reasons this information has not been included in the Annual report. Please contact the school Principal for more information.

## School Contact Information

Address:	PO Box 306, Beechworth, VIC, 3747.
Principal:	Glen Watson
School Council President:	Clayton Neil
Telephone:	(03) 5728 2940
Email:	<a href="mailto:info@beechworthmontessori.vic.edu.au">info@beechworthmontessori.vic.edu.au</a>
Web site:	<a href="http://www.beechworthmontessori.vic.edu.au">http://www.beechworthmontessori.vic.edu.au</a>